

## eXware707Q Tech-Note

eXware707Q is a rugged and compact device designed as a powerful IoT Controller. The product can integrate JMobile HMI with its HTML interface and powerful gateway functions, IEC 61131 PLC with networked I/O, Corvina Cloud secure remote connection. It is the ideal device for building data-intensive cloud edge solutions for IoT thanks to its quad core ARM CPU.



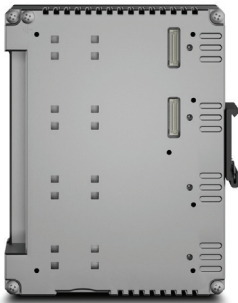
- JMobile runtime with HTML5 JM4web HMI
- JMobile data gateway functions including OPC UA server/client and all JMobile protocols available
- Secure routing with Corvina Cloud
- Supports CODESYS PLC and network stacks
- Quad core ARM CPU
- 3 Ethernet ports for network separation WAN/LAN
- Rugged all metal design
- Wide operating temperature range

## Highlights

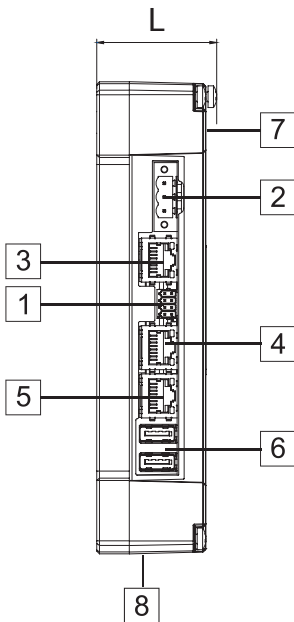
With the combination of JMobile HMI, Corvina Cloud security and CODESYS PLC, eXware offers companies the chance to start at an uncomplicated level in IoT and yet allows enormous future expansion into more complex aspects of Industry 4.0. Speaking across the vast library of JMobile protocols as well as OPC UA to higher enterprise level control, the eXware is a true Plug and Use product.

- Compatible with existing installations including legacy equipment
- Compatible with CODESYS V3. Supports network stacks (EtherCAT, PROFINET, EtherNet/IP, POWERLINK) and offers local I/O expandability
- Communication security based on HTTPS and TLS
- Straightforward wireless connectivity using the optional PLCM09 plug-in modem
- Plug-in modules for system expansion
- System settings by web browser
- Can be used as a Linux-based open platform
- Ready for OPC UA pub/sub over TSN
- Ready for Corvina Cloud 2.0

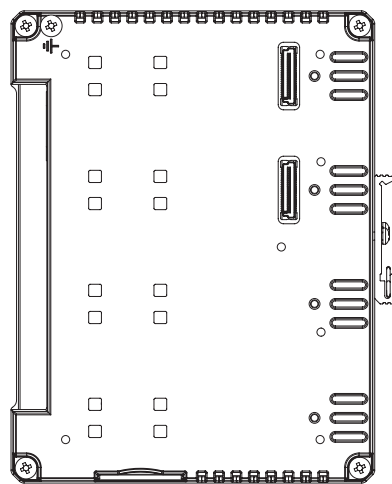
# Technical Data



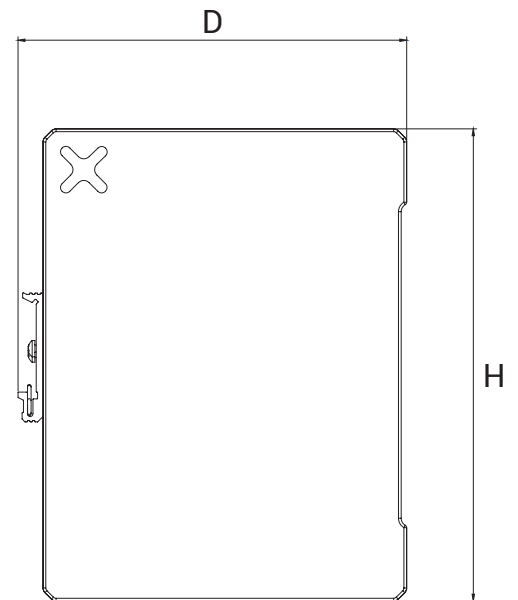
| System Resources                     |  |
|--------------------------------------|--|
| CPU                                  | ARM Cortex-A9 800 MHz quad core  |
| Operating System                     | Linux RT   |
| Flash                                | 8 GB   |
| RAM                                  | 2 GB   |
| Real Time Clock, RTC Back-up, Buzzer | Yes  |
| Interface                            |  |
| Ethernet port                        | 3 (port 0 - 10/100/1000, port 1 - 10/100, port 2 - 10/100)   |
| USB port                             | 2 (Host v. 2.0, max. 500 mA)   |
| Serial port                          | 1 (RS-232, RS-485, RS-422, software configurable)<br>Max 3 serial ports using plug-in modules.   |
| SD card                              | Yes  |
| Expansion                            | 2 slots for plug-in modules  |
| Ratings                              |  |
| Power supply                         | 24 Vdc (10 to 32 Vdc)  |
| Current Consumption                  | 0.55 A max. at 24 Vdc  |
| Input Protection                     | Electronic   |
| Battery                              | Yes  |
| Environment Conditions               |  |
| Operating Temp                       | -20°C to +60°C<br>Plug-in modules and USB devices may limit max temperature to +50 °C.   |
| Storage Temp                         | -20°C to +70°C   |
| Operating / Storage Humidity         | 5 - 85% RH, non condensing   |
| Protection Class                     | IP20   |
| Dimensions and Weights               |  |
| Faceplate LxH                        | 44 x 174 mm  |
| Depth D                              | 144 mm   |
| Weight                               | 0.7 Kg   |
| Mounting                             | DIN Rail (TS35)  |
| Approvals                            |  |
| CE                                   | Emission EN 61000-6-4 Immunity<br>EN 61000-6-2 for installation in industrial environments<br>Emission EN 61000-6-3, Immunity EN 61000-6-1<br>for installation in residential environments<br>EN 60945, EMC Emissions and Immunity for marine applications |
| UL                                   | cULus: UL61010-1 / UL61010-2-201   |
| UL                                   | cULus: Class 1 Div 2   |
| IECEX                                | Zone 2: Ex nA IIC T5 Gc / -20°C ≤ Tamb ≤ +60°C.<br>Limited to 0°C ≤ Tamb ≤ +50°C with PLIO03   |
| ATEX                                 | Zone 2: II 3 G Ex nA IIC T5 Gc / -20°C ≤ Tamb ≤ +60°C.<br>Limited to 0°C ≤ Tamb ≤ +50°C with PLIO03  |



- 1 Serial port
- 2 Power supply
- 3 Ethernet port 0 (10/100/1000 Mb)



- 4 Ethernet port 1 (10/100 Mb)
- 5 Ethernet port 2 (10/100 Mb)
- 6 USB ports 1 and 2



- 7 Expansion slots for plug-in modules
- 8 SD Card slot

## Ordering Information

| Model      | Part Number  | Description  |
|------------|--------------|--|
| eXware707Q | +EXW707QU0P1 | High performance IoT controller and gateway, quad core CPU, 3 Ethernet ports, 1 serial port, 2 USB ports |