



# eX700 Series

The Revolutionary IIoT Controller





Exor reserves the right to make changes in the specifications of its proprietary products at any time without notice.



# eX700 Series

## Key Features

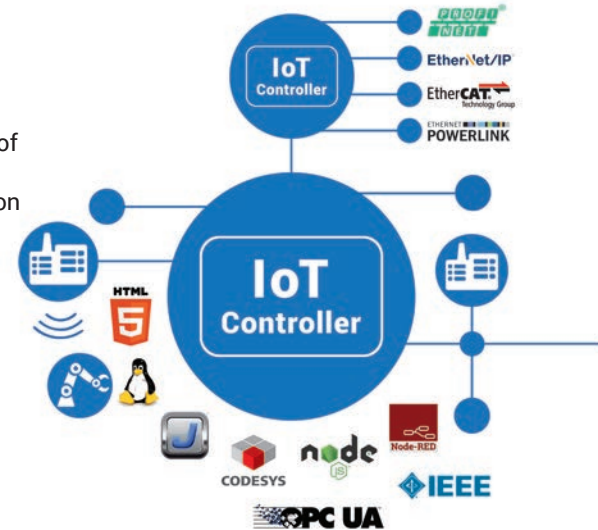
- Created Within the X Platform
- Industry 4.0 Product Concept
- OS Linux RT
- JMobile - the software that powers the X Platform
- CODESYS V3 with Ethernet I/O Stacks
- Powerful Board Components
- Multitouch with Gesturing
- Brilliant 2,000,000 pixel Display
- Wide Angle Visibility
- Beautiful 16,000,000 Colours
- Resistant to Scratches, UV and Chemicals
- Total Glass Design
- Fast Boot <10 secs
- Fast Writing 50MByte / sec
- Up to 3 Ethernet Networks with different PHY
- Plug in Modules for system Expansion

A beautiful product, created within the X Platform and hence with a unsurpassed ability to offer access and scalability into Industry 4.0. The tremendous technical flexibility is backed by a company with 45 years in the industry and still with a market price at previous models.

The eX700 Series represents a ground breaking product to come to market:  
**The Revolutionary IIoT Controller.**

The product's concept is permitting a prudent investment into the implementation of IIoT and hence Industry 4.0 compatibility. As such it provides a true all in one solution covering many functions such as:

- As a powerful **Browser** with industry standard Web engine powering state of the art Chromium browser
- As a **Gateway** with up to 3 Ethernet networks, OPC UA pub/sub\* Server and Client, future TSN connectivity\* and multiple protocols
- As a powerful **HMI** using JMobile inside with multi touch operation in a brilliant high resolution display
- As a **PLC** with the CODESYS V3 and Ethernet distributed I/O stacks and extremely high processing power



\*Road map for 2017

Design

# Revolutionary in its Completeness



Exor has updated its flagship product and gone much further, creating the ultimate all-in-one experience. Designed from the ground up to push the limits of visualisation in areas such as display, colours, brightness and angle of view while still remaining within a robust industrial enclosure.

A true X platform masterpiece.





# Precision Engineering

Exacting standards of engineering across every single point of the display has given us more than 2,100,000 pixels which reflect images perfectly. The effect reduces the fatigue upon operators hence improving safety and productivity.





# As Wide a Colour Palette as in Real Life

With up to 16,000,000 colours available the eX700 series replicates better than ever before the tones and hues recognised by the human eye. This leaves every human machine interaction feeling as natural as is possible. In house developers will be able to code rich and inviting user interfaces leading to a better final customer user experience.





# Total Glass Elegance

The eX700 was designed to offer unparalleled flexibility, in an Industrial IoT world where future value pools are shifting rapidly. But flexibility and incredible performance were not only the design brief: we needed to house everything in an elegant enclosure. With total glass design for the display and strong, decisive edges to the casing the eX700 portrays perfectly the idea of Exor that an industrial product can also show strength in elegance.





# Performance

# Exceptional Performance no Matter the Environment



Designed from the start to demonstrate the unique power of JMobile the software inside the **X** Platform in all possible environments.

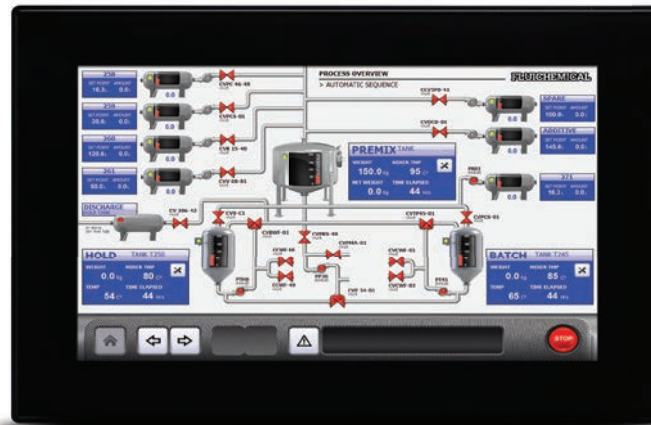
Do manage this we have balanced performance with consumption, permitted a vast array of interfaces and placed all within a class leading robust and elegant housing.





# Single, Dual or Quad Core

The ARM Cortex A9 processor offers just the correct balance between computational capacity and power usage and hence reliability. With the operating system Linux RT on board and the choice up to 2GB of super fast Ram, up to 8GB of flash storage and single, dual or quad core all ensure that the performance of the eX700 exceeds your requirements.





# Transfer Data as Never Before

To ensure interoperability the eX700 series is loaded with interfaces and optional modules. The ease of connectivity is one of our critical goals via JMobile - the software inside the X Platform. The eX700 has many internal hardware choices such as the FPGA that are unique to industrial visualisation and that are capable of securely handling vast amounts of data transfer and analytics. We have placed up to 3 Ethernet Ports (>1GB), 2 USB ports, a serial port and SD card slot to allow a vast range of connections to be made. And just in case that was not enough our very popular plug in modules remain.





# Independent Third Party Verification of Performance

The high quality of the eX700 series is seen clearly in the range of certification that it will receive and hence have direct possibility of use in many different vertical markets. Being a new product released in January 2017 and as is common practice most certifications are currently pending application or reply, however within 2017 there will be: UL Ordinary Location, DNV, RMC, Class 1 Div 2, IECEx and the close neighbour ATEX.



# JMobile

## the software inside the X Platform

The eX700 was constructed from day one to take full advantage of the powerful JMobile - the software inside the X Platform. The incredible sensation of total tranquility in the power and capability when using the eX700 is just a consequence when one company is developing hardware, firmware and software.

***JMobile***<sup>®</sup>

The software inside X Platform

# Data Sheet

# Technical Data



## eX705

System Resources	
Display - Colors	5" TFT 16:9 LED - 64K
Resolution	800x480, WVGA
Brightness	300 Cd/m2 typ.
Dimming	to 0%
Touchscreen	True Glass Projected Capacitive, Multitouch 2 number of gestures
CPU	ARM Cortex-A8 - 1 GHz
Operating System	Linux RT
Flash	4GB
RAM	512 Mb
Real Time Clock, RTC Back-up, Buzzer	Yes
Interface	
Ethernet port	2 ( port 0 - 10/100, port 1 - 10/100 )
USB port	Host v2.0, max. 500mA
Serial port	RS-232, RS-485, RS-422, software configurable. Max 3 serial ports using plug-in modules.
SD card	Yes
Expansion	1 slot for plug in modules
Ratings	
Power supply	24 Vdc ( 10 to 32 Vdc )
Current Consumption	0.6 A at 24 Vdc (max.)
Input Protection	Electronic
Battery	Rechargeable Lithium battery, not user-replaceable
Environment Conditions	
Operating Temp	-20° to +60 °C (vertical installation) Plug-in modules and USB devices may limit max temperature to +50 °C
Storage Temp	-20°C to +70°C
Operating / Storage Humidity	5-85% RH, non condensing
Protection Class	IP66 (front), IP20 (rear)
Dimensions and Weights	
Faceplate LxH	147x107 mm (5.78x4.21")
Depth D	56+8 mm (2.40+0.31")
Weight	1.0 Kg
Approvals	
CE	Emission EN 61000-6-4, Immunity EN 61000-6-2 for installation in industrial environments





# Technical Data

# eX707



System Resources	
Display - Colors	7" TFT 16:9 LED - 16M
Resolution	800x480, WVGA
Brightness	500 Cd/m2 typ.
Dimming	to 0%
Touchscreen	True Glass Projected Capacitive, Multitouch 2 number of gestures
CPU	ARM Cortex-A9 dual core 800 MHz
Operating System	Linux RT
Flash	4 GB
RAM	1 GB
Real Time Clock, RTC Back-up, Buzzer	Yes
Interface	
Ethernet port	3 ( port 0 - 10/100/1000, port 1 - 10/100, port 2 - 10/100 )
USB port	2 Host V2.0, max. 500 mA
Serial port	RS-232, RS-485, RS-422, software configurable. Max 3 serial ports using plug-in modules.
SD card	Yes
Expansion	2 slot for plug in modules
Ratings	
Power supply	24 Vdc (10 to 32 Vdc)
Current Consumption	0.7 A at 24 Vdc (max.)
Input Protection	Electronic
Battery	Rechargeable Lithium battery, not user-replaceable
Environment Conditions	
Operating Temp	-20° to +60 °C (vertical installation) Plug-in modules and USB devices may limit max temperature to +50 °C
Storage Temp	-20°C to +70°C
Operating / Storage Humidity	5-85% RH, non condensing
Protection Class	IP66 (front), IP20 (rear)
Dimensions and Weights	
Faceplate LxH	187x147 mm (7.36x5.79")
Depth D	47+8 mm (1.85+0.31")
Weight	1.3 Kg
Approvals	
CE	Emission EN 61000-6-4, Immunity EN 61000-6-2 for installation in industrial environments



# Technical Data

# eX710



System Resources	
Display - Colors	10.1" TFT 16:9 LED - 16M
Resolution	1280x800, WXGA
Brightness	500 Cd/m2 typ.
Dimming	to 0%
Touchscreen	True Glass Projected Capacitive, Multitouch 2 number of gestures
CPU	ARM Cortex-A9 dual core 800 MHz
Operating System	Linux RT
Flash	4 GB
RAM	1 GB
Real Time Clock, RTC Back-up, Buzzer	Yes
Interface	
Ethernet port	3 ( port 0 - 10/100/1000, port 1 - 10/100, port 2 - 10/100 )
USB port	2 Host V2.0, max. 500 mA
Serial port	RS-232, RS-485, RS-422, software configurable. Max 3 serial ports using plug-in modules.
SD card	Yes
Expansion	2 slot for plug in modules
Ratings	
Power supply	24 Vdc (10 to 32 Vdc)
Current Consumption	1.0 A at 24 Vdc (max.)
Input Protection	Electronic
Battery	Rechargeable Lithium battery, not user-replaceable
Environment Conditions	
Operating Temp	-20° to +60 °C (vertical installation) Plug-in modules and USB devices may limit max temperature to +50 °C
Storage Temp	-20°C to +70°C
Operating / Storage Humidity	5-85% RH, non condensing
Protection Class	IP66 (front), IP20 (rear)
Dimensions and Weights	
Faceplate LxH	282x197 mm (11.10x7.80")
Depth D	56+8 mm (2.20+0.33")
Weight	1.7 Kg
Approvals	
CE	Emission EN 61000-6-4, Immunity EN 61000-6-2 for installation in industrial environments



# Technical Data

# eX715



System Resources	
Display - Colors	15,6" TFT LED - 16M
Resolution	1366x768, HD
Brightness	300 Cd/m2 typ.
Dimming	to 0%
Touchscreen	True Glass Projected Capacitive, Multitouch 2 number of gestures
CPU	ARM Cortex-A9 dual core 800 MHz
Operating System	Linux RT
Flash	8 GB
RAM	2 GB
Real Time Clock, RTC Back-up, Buzzer	Yes
Interface	
Ethernet port	3 ( port 0 - 10/100/1000, port 1 - 10/100, port 2 - 10/100 )
USB port	2 Host V2.0, max. 500 mA
Serial port	RS-232, RS-485, RS-422, software configurable. Max 3 serial ports using plug-in modules.
SD card	Yes
Expansion	2 slot for plug in modules
Ratings	
Power supply	24 Vdc (10 to 32 Vdc)
Current Consumption	1.2 A at 24 Vdc (max.)
Input Protection	Electronic
Battery	Rechargeable Lithium battery, not user-replaceable
Environment Conditions	
Operating Temp	-20° to +60 °C (vertical installation) Plug-in modules and USB devices may limit max temperature to +50 °C
Storage Temp	-20°C to +70°C
Operating / Storage Humidity	5-85% RH, non condensing
Protection Class	IP66 (front), IP20 (rear)
Dimensions and Weights	
Faceplate LxH	422x267 mm (16.6x10.5")
Depth D	56+8 mm (2.20+0.33")
Weight	4.1 Kg
Approvals	
CE	Emission EN 61000-6-4, Immunity EN 61000-6-2 for installation in industrial environments

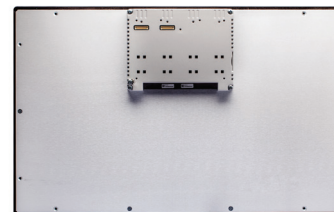


# Technical Data

# eX721



System Resources	
Display - Colors	21,5" TFT LED - 16M
Resolution	1920x1080, full HD
Brightness	300 Cd/m2 typ.
Dimming	to 0%
Touchscreen	True Glass Projected Capacitive, Multitouch 2 number of gestures
CPU	ARM Cortex-A9 dual core 800 MHz
Operating System	Linux RT
Flash	8 GB
RAM	2 GB
Real Time Clock, RTC Back-up, Buzzer	Yes
Interface	
Ethernet port	3 ( port 0 - 10/100/1000, port 1 - 10/100, port 2 - 10/100 )
USB port	2 Host V2.0, max. 500 mA
Serial port	RS-232, RS-485, RS-422, software configurable. Max 3 serial ports using plug-in modules.
SD card	Yes
Expansion	2 slot for plug in modules
Ratings	
Power supply	24 Vdc (10 to 32 Vdc)
Current Consumption	1.7 A at 24 Vdc (max.)
Input Protection	Electronic
Battery	Rechargeable Lithium battery, not user-replaceable
Environment Conditions	
Operating Temp	-20° to +60 °C (vertical installation) Plug-in modules and USB devices may limit max temperature to +50 °C
Storage Temp	-20°C to +70°C
Operating / Storage Humidity	5-85% RH, non condensing
Protection Class	IP66 (front), IP20 (rear)
Dimensions and Weights	
Faceplate LxH	552x347 mm (21,7x13,66")
Depth D	56+8.5 mm
Weight	6.1 Kg
Approvals	
CE	Emission EN 61000-6-4, Immunity EN 61000-6-2 for installation in industrial environments



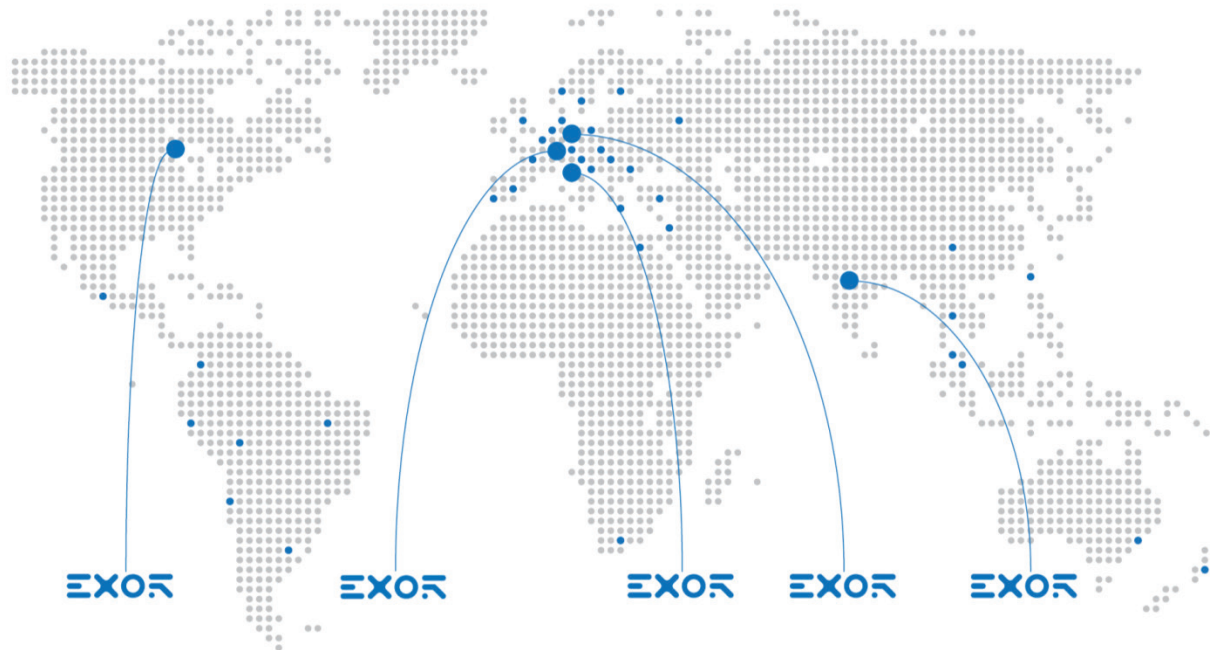
# Accessories



<b>PLCM01</b> <b>PLCM02</b> <b>PLCM03</b> <b>PLCM04</b> <b>PLCM05</b> <b>PLCM06</b> <b>PLCM07</b>	<p>Plug-in module CAN</p> <p>Plug-in module for KNX/EIB (TP interface)</p> <p>Plug-in module RS-232</p> <p>Plug-in module RS-422/485 with optical insulation</p> <p>Plug-in extender for use with PLIO03 (only for eTOP605 and eTOP504)</p> <p>Plug-in module Profibus DP slave 12 Mb</p> <p>Secure Cloud Connector</p>	
<b>CODESYS V3 SoftPLC</b> <b>PLCM01-CDS</b> <b>PLCM02-CDS</b> <b>PLCM05-CDS</b>	<p>CODESYS V3 activation license</p> <p>Plug-in module CAN + CODESYS V2</p> <p>Plug-in module for KNX/EIB (TP interface) + CODESYS V2</p> <p>Plug-in module CODESYS V2</p>	
<b>PLIO03</b>  <b>PLIO04</b>  <b>PLIO06</b> <b>PLIO07</b>	<p>I/O Module with 20 DI 24VDC, 12 DO 24VDC 0,5 A, 8 AI (4 diff or 8 singl or 4 PT100 or 4 TC), 4 AO, 1 PT100 Cold Junct</p> <p>I/O Module with 10 DI 24VDC, 10 DO SSR 1.4 A, 4 Programmable AI voltage/PT100/TC, 4 AI voltage, 1 PT100</p> <p>Compact I/O module. 8 DI, 6 DO, 1 Relay Output</p> <p>Compact I/O module. 2 Relay Outputs</p>	



Exor reserves the right to make changes in the specifications of its proprietary products at any time without notice.



## Call your local Exor Representative

### GERMANY

Exor Deutschland GmbH  
Tel.: +49 202 27911 0  
Fax: +49 202 27911 44  
[info@exor.de](mailto:info@exor.de)  
[www.exor.de](http://www.exor.de)

### INDIA

Exor India Private Ltd.  
Tel.: +91 022 27810422  
Fax: +91 022 27810424  
[info@exorindia.com](mailto:info@exorindia.com)  
[www.exorindia.com](http://www.exorindia.com)

### ITALY

Exor International S.p.A.  
Tel.: +39 045 8750404  
Fax: +39 045 8779023  
[info@exorint.it](mailto:info@exorint.it)  
[www.exorint.it](http://www.exorint.it)

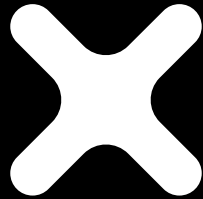
### SWITZERLAND

Exor Schweiz GmbH  
Tel.: +41 55 6195807  
Fax: +41 55 6195806  
[info@exorschweiz.ch](mailto:info@exorschweiz.ch)  
[www.exorschweiz.ch](http://www.exorschweiz.ch)

### USA

Exor America  
Tel.: +1 513 874 0900  
Fax: +1 513 874 2707  
[info@exoramerica.com](mailto:info@exoramerica.com)  
[www.exoramerica.com](http://www.exoramerica.com)

IIoT industry 4.0 ready



**PLATFORM**

powered by EXOR