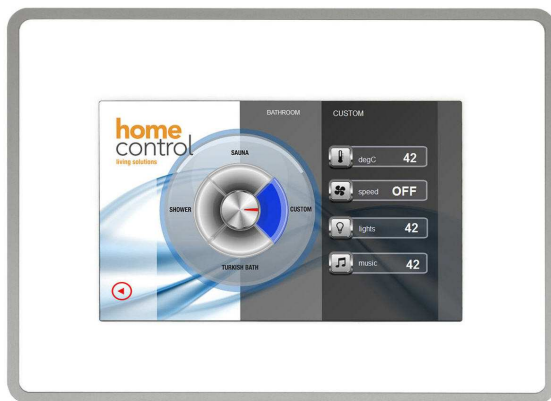


## DomiOP eBIS504

The eBIS504 compact 4,3" widescreen display completes the eBIS series with a no-compromise low-cost product. The built-in dual 100Mb Ethernet interfaces with switch functionality enhance its communication capability and make it the ideal choice for small systems.



- 4.3" TFT color display
- 480x272 pixel resolution, 64K colors
- Resistive touchscreen
- 2 Ethernet ports with switch function
- USB Host port
- SD Card slot
- Multistandard Serial Port
- Connection to bus systems using optional plug-in modules

### Highlights

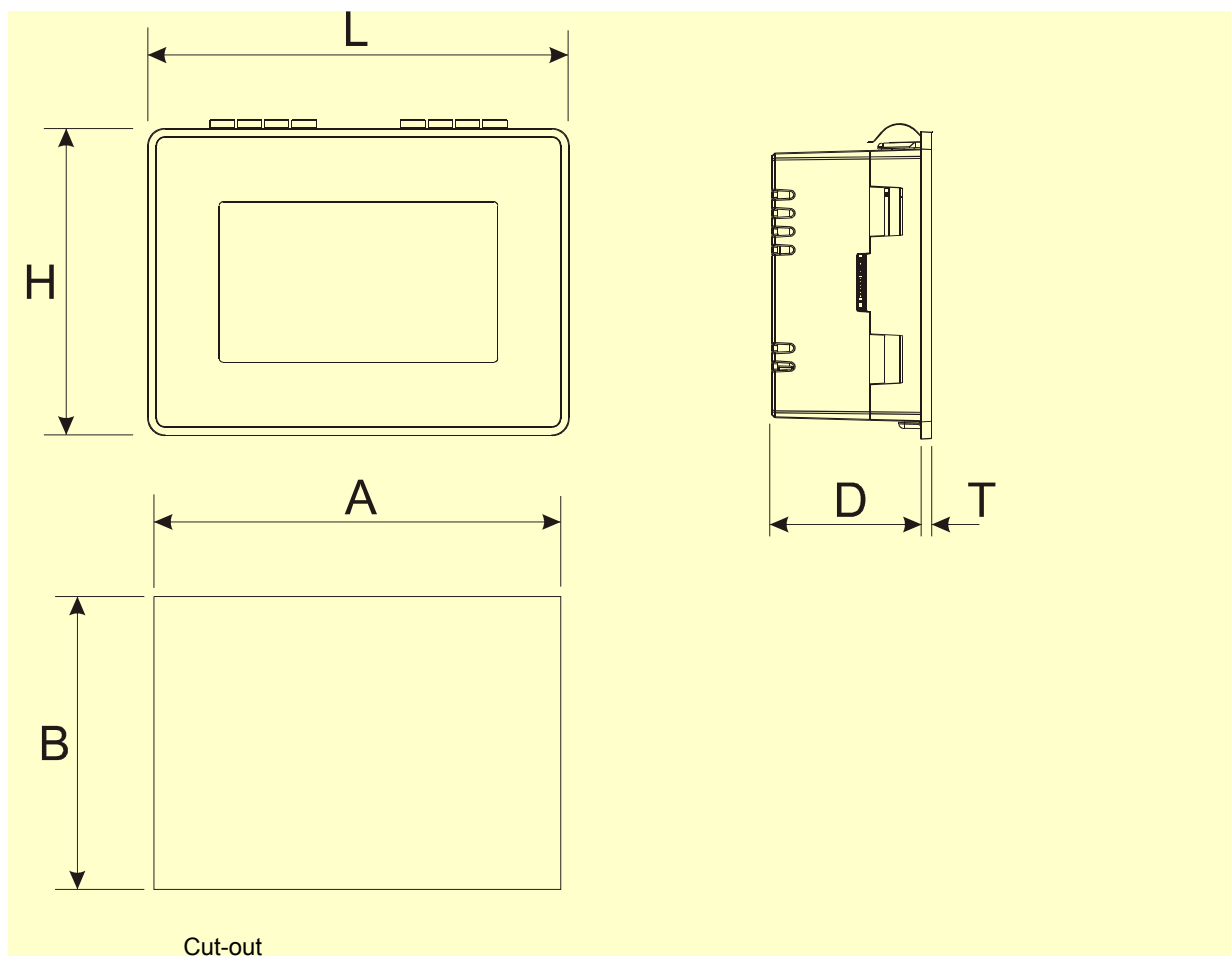
The eBIS HMI panels have been designed to run the JMobile software.

- JMobile runtime included. Full compatibility with JMobile Studio.
- Full vector graphic support. Native support of SVG graphic objects. Transparency and alpha blending.
- Full object dynamics: control visibility and transparency, move, resize, rotate any object on screen. Change properties of basic and complex objects.
- TrueType fonts
- Multilanguage applications. Easily create and manage your applications in multiple languages to meet global requirements. Far East languages are supported. Tools available in JMobile Studio support easy third-party translations and help reducing development and maintenance costs of the application
- Data display in numerical, text, bargraph, analog gauges and graphic image formats.
- Rich set of state-of-the-art HMI features: data acquisition, alarm handling, scheduler and timed actions (daily and weekly schedulers, exception dates), recipes, users and passwords, e-mail and RSS feeds, rotating menus
- Includes support for a wide range of communication drivers for Factory and Building Automation systems.
- Multiple drivers communication capability.
- Remote monitoring and control. Client-Server functionality. Mobile clients supported.
- Off-line simulation with JMobile Studio.
- Powerful scripting language for automating HMI applications. Script debugging improves efficiency in application development.
- Rich gallery of symbols and objects
- Project templates
- Optional plug-in modules for fieldbus systems, I/O and controllers.

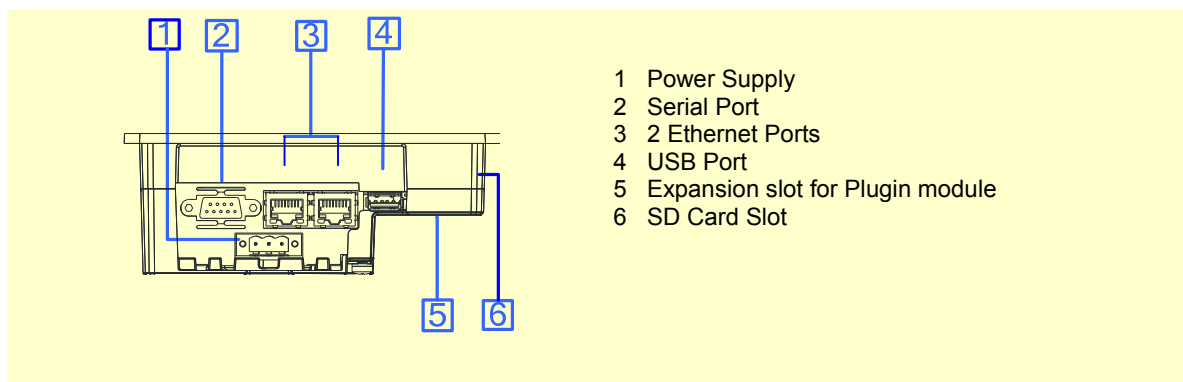
## Technical Data

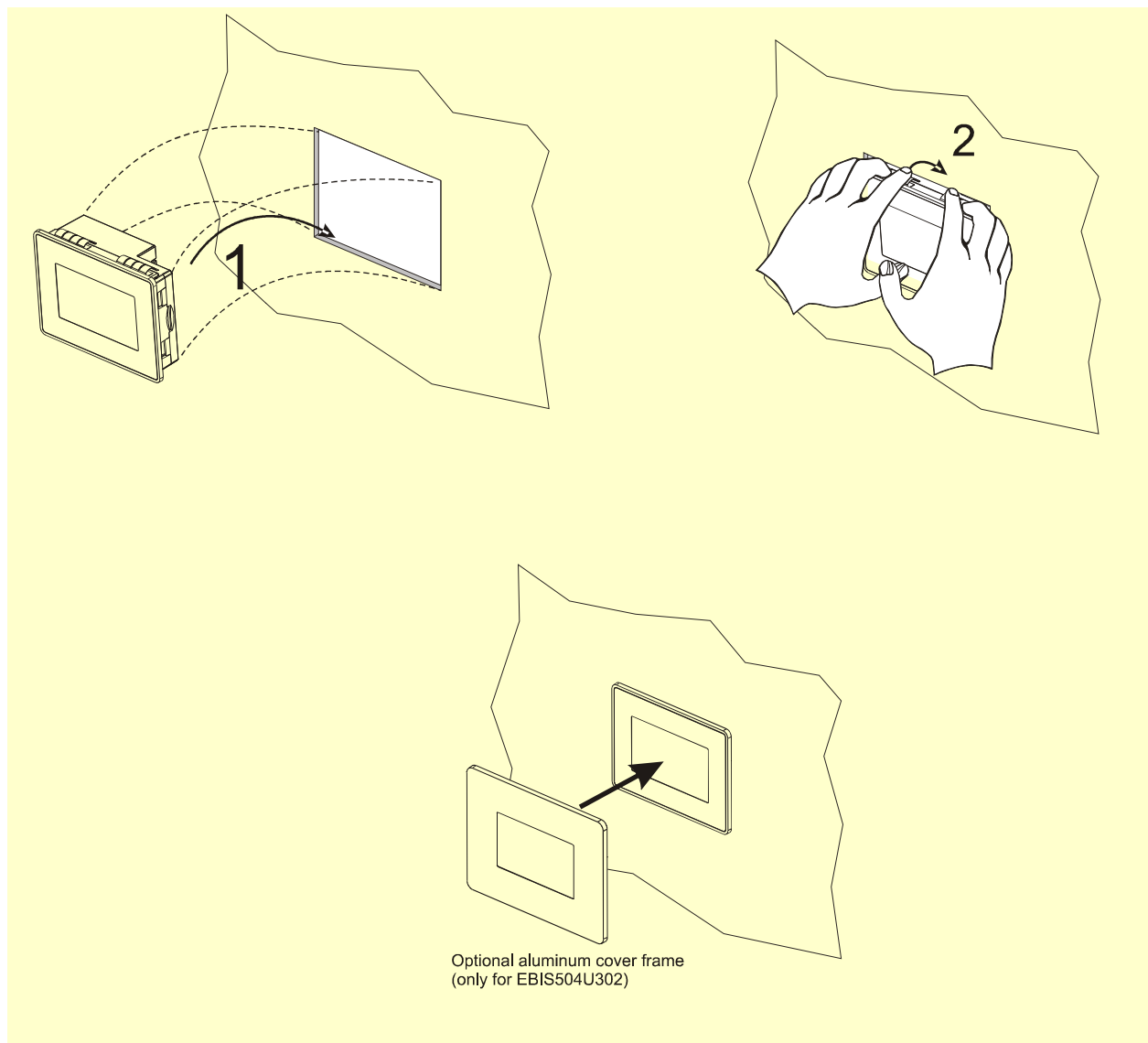
|   |   |                                 |  |                           |
|---|---|---------------------------------|--|---------------------------|
| <b>Display</b>                          |   | Hardware Real Time Clock        |  | Yes, with battery back-up |
| Type                                    | TFT   | Screen saver                    | Yes  |                           |
| Resolution                              | 480x272 pixel   | Buzzer                          | Yes, audible feedback for touchscreen              |                           |
| Active display area                     | 4.3" diagonal (95.4x53.9 mm)  |                                 |  |                           |
| Colors                                  | 64K   |                                 |  |                           |
| Backlight                               | LED   |                                 |  |                           |
| Brightness                              | 150 cd/m <sup>2</sup> typ.  |                                 |  |                           |
| Dimming                                 | Yes   |                                 |  |                           |
| <b>System Resources</b>                 |   | <b>Ratings</b>                  |  |                           |
| Operating System                        | Microsoft Windows CE 6.0  | Power supply voltage            | 24 Vdc (18 to 30 Vdc)                              |                           |
| User memory                             | 128 MB Flash  | Current consumption             | 0.4A at 24Vdc(max.)                                |                           |
| RAM                                     | 256MB DDR   | Fuse                            | Automatic  |                           |
|   |   | Weight                          | Approx 1.0 Kg                                      |                           |
|   |   | Battery                         | Rechargeable Lithium battery, not user-replaceable |                           |
| <b>Operator Interface</b>               |   | <b>Environmental Conditions</b> |  |                           |
| Touchscreen                             | Analog resistive  | Operating temperature           | 5 to 40 °C (vertical installation)                 |                           |
| LED indicators                          | 1 (dual color)  | Storage temperature             | -20 to +70 °C                                      |                           |
|   |   | Operating and storage humidity  | 5 – 85 % relative humidity, non-condensing         |                           |
| <b>Interface</b>                        |   | Protection class                | IP20   |                           |
| Ethernet                                | 2 10/100 Mbit with integrated Switch                                      | <b>Dimensions</b>               |  |                           |
| USB                                     | 1 Host interfaces v.2.0 and v.1.1   | Faceplate LxH                   | 147x107 mm (5.78x4.21")                            |                           |
| Serial                                  | RS-232, RS-485, RS-422, software configurable                             | Cutout AxB                      | 136x96 mm (5.35x3.78")                             |                           |
| Expansion Slot                          | 1 Optional Plugin   | Depth D+T                       | 56 + 4mm (2.40+0.16")                              |                           |
| Memory Card                             | SD Card Slot  | <b>Approvals</b>                |  |                           |
| <b>Functionality</b>                    |   | CE                              | EN 50090-2-2 + EN 50090-2-2/A1+EN 50090-2-2/A2     |                           |
| Vector graphics                         | Yes, includes SVG support   |                                 | Immunity   |                           |
| Object dynamics                         | Yes. Visibility, opacity, position, size, rotation for most object types. |                                 | EN 61000-6-1,                                      |                           |
| TrueType fonts                          | Yes   |                                 | Emission   |                           |
| Multiple driver communication           | Yes   |                                 | EN 61000-6-3                                       |                           |
| Data acquisition and trend presentation | Yes. Flash memory storage   |                                 | for installation in residential environments       |                           |
| Multilanguage                           | Yes, with runtime language switching.                                     |                                 |  |                           |
| Recipes                                 | Yes. Flash memory storage   |                                 |  |                           |
| Alarms                                  | Yes   |                                 |  |                           |
| Historical event list                   | Yes   |                                 |  |                           |
| Users and passwords                     | Yes   |                                 |  |                           |

## Dimensions



## Connections



**Mounting into Wall-mount Box**

**Ordering Information**

| <b>Model-Type</b>        | <b>Part Number</b> | <b>Description</b>   |
|--------------------------|--------------------|--|
| eBIS504-White            | EBIS504U101        | 4.3" TFT color touchscreen panel with Ethernet interface, White front panel. JMobile run-time.                       |
| eBIS504-Grey             | EBIS504U201        | 4.3" TFT color touchscreen panel with Ethernet interface. JMobile run-time. Grey front panel.                        |
| eBIS504-Black            | EBIS504U301        | 4.3" TFT color touchscreen panel with Ethernet interface. JMobile run-time. Black front panel.                       |
| eBIS504-Black with cover | EBIS504U302        | 4.3" TFT color touchscreen panel with Ethernet interface, JMobile run-time. Black front panel with additional cover. |
| COVER04-01               | R-COVER015         | Aluminum cover frame for eBIS504 – only for EBIS504U302  |
| BOX504-01                | R-BOX10            | Wall mount box for eBIS504   |

**ptn0375****Ver. 1.3****Copyright © 2011-2012 Exor International S.p.A. – Verona, Italy**

Subject to change without notice

The information contained in this document is provided for informational purposes only. While efforts were made to verify the accuracy of the information contained in this documentation, it is provided "as is" without warranty of any kind.

[www.uniop.com](http://www.uniop.com)

ptn0375-3.doc - 22.03.2012

DomiOP eBIS504